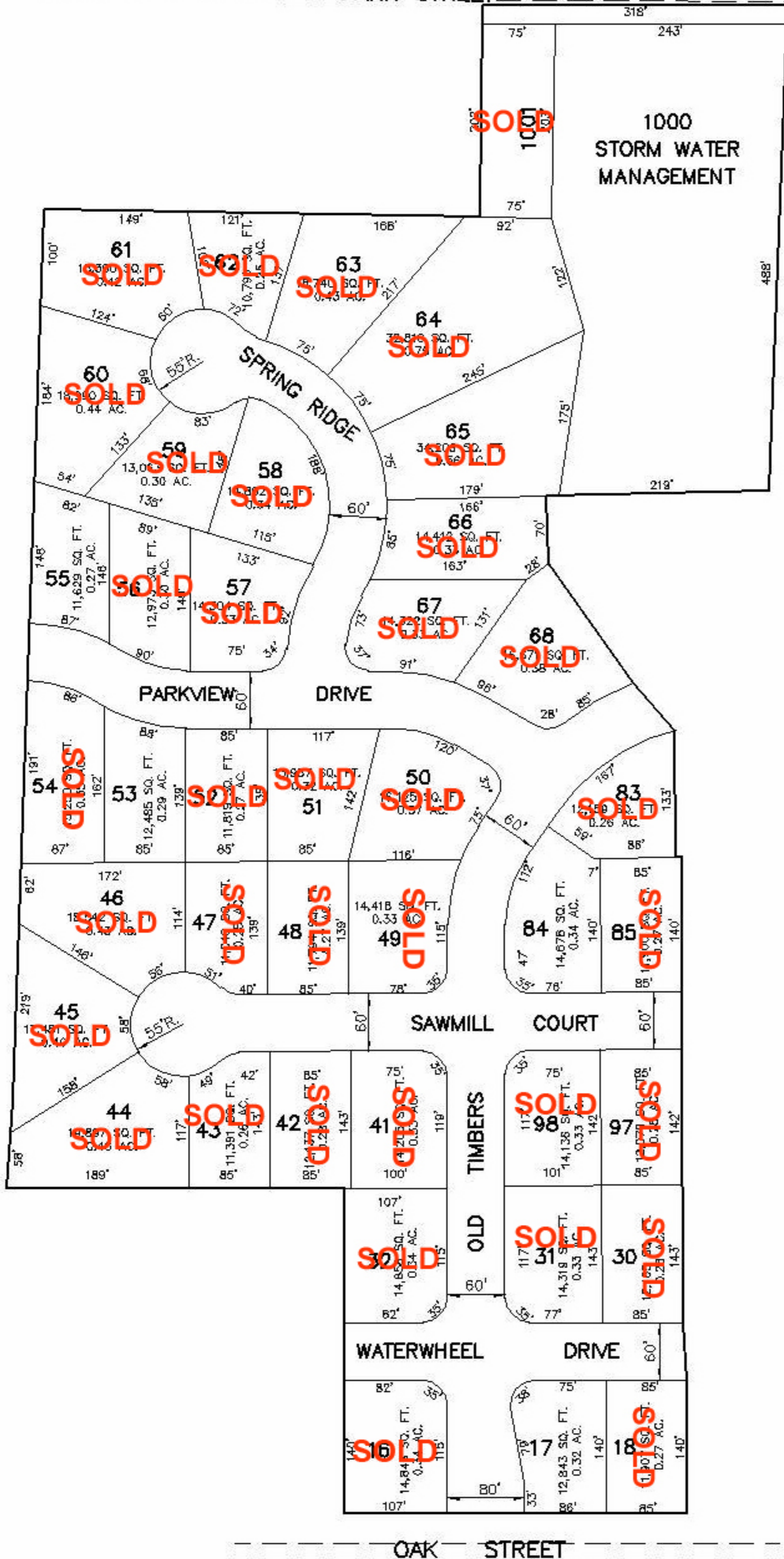


PARK STREET

OAK MILL ESTATES

FIRST ADDITION



SCALE : 1" = 200'
 MAY, 2005
 AREA = ±20.47 ACRES

OAK STREET

OWNER/SUBDIVIDER

STITES DEVELOPMENT INC.
 6400 WILLOW SPRINGS RD.
 SPRINGFIELD, ILLINOIS 62707
 CONTACT: JOHN STITES, 529-4045



MARTIN ENGINEERING COMPANY

CONSULTING ENGINEERS/LAND SURVEYORS
 (ILLINOIS PROFESSIONAL DESIGN FIRM NO. 184-002843)
 3223 S. MEADOWBROOK RD., SPRINGFIELD, ILLINOIS 62711
 Phone : (217) 698-8900, Fax : (217) 698-8922
 E-Mail : mecmal@martinengineeringco.com