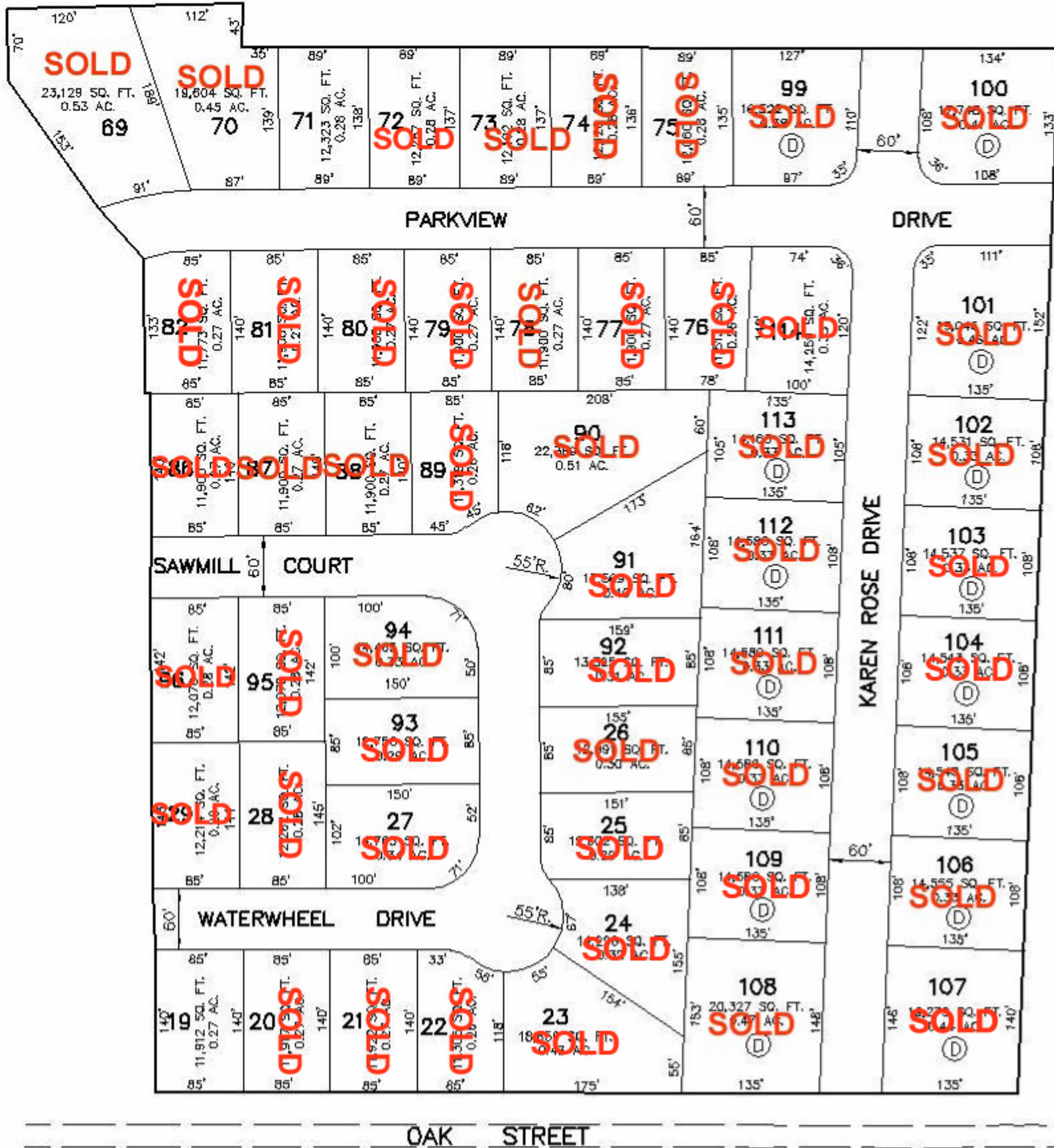


OAK MILL ESTATES

SECOND ADDITION



SCALE : 1" = 200'

MAY, 2005

AREA = ±21.12 ACRES

Ⓧ - DUPLEX LOT

OWNER/SUBDIVIDER

STITES DEVELOPMENT INC.
6400 WILLOW SPRINGS RD.
SPRINGFIELD, ILLINOIS 62707
CONTACT: JOHN STITES, 529-4045



CONSULTING ENGINEERS/LAND SURVEYORS

(ILLINOIS PROFESSIONAL DESIGN FIRM NO. 184-002843)
3223 S. MEADOWBROOK RD., SPRINGFIELD, ILLINOIS 62711
Phone : (217) 698-8900, Fax : (217) 698-8922
E-Mail : mecmail@martinengineeringco.com